

ELM EFIS

Software Update Instructions

Rev1.0

March 2026

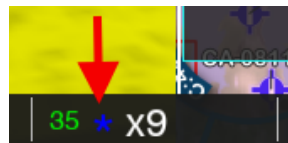
1. System Firmware Update

1.1 Online Update

Requirements

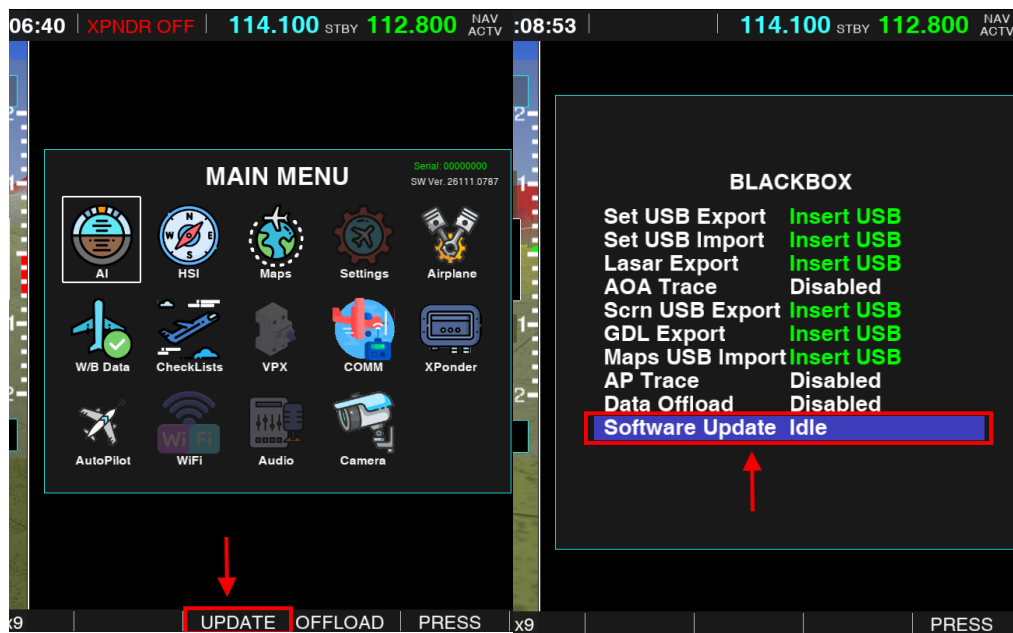
- EFIS must be connected to the Internet via:
 - WiFi dongle, or
 - LAN cable
- Internet connection must be stable and high speed

When a valid Internet connection is established, a small blue star icon appears at the bottom center of the display next to the zoom level indicator.



Procedure

1. Press the **left knob** to open the **Main Menu**
2. Navigate to:
Main Menu → Settings → BlackBox → Software Update
or press **Button 5 (UPDATE)**



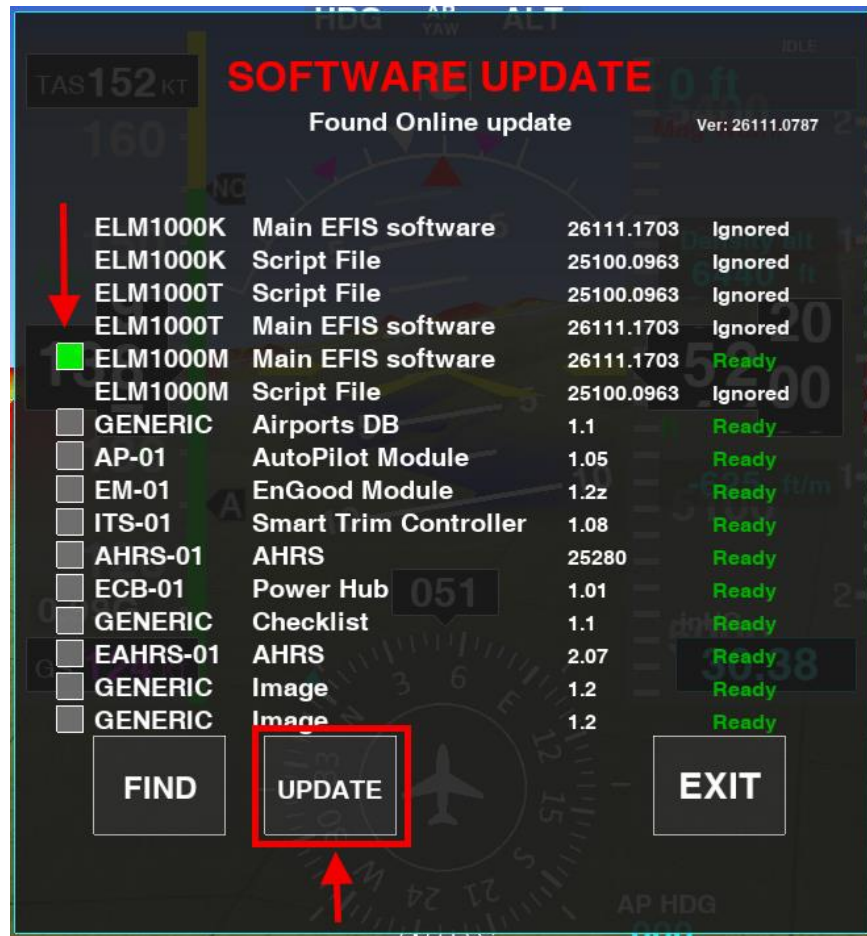
3. In the Software Update screen, press **FIND**
 - The system will check for available updates
 - This process may take up to one minute



4. If updates are available:
 - A list of updates will be displayed
 - Each update has a checkbox on the left



5. To select the main firmware update:
 - Locate **Main EFIS Software** in the list
 - Tap the checkbox until it turns green
6. If instructed, select additional updates in the same way



7. Press **UPDATE** to begin installation

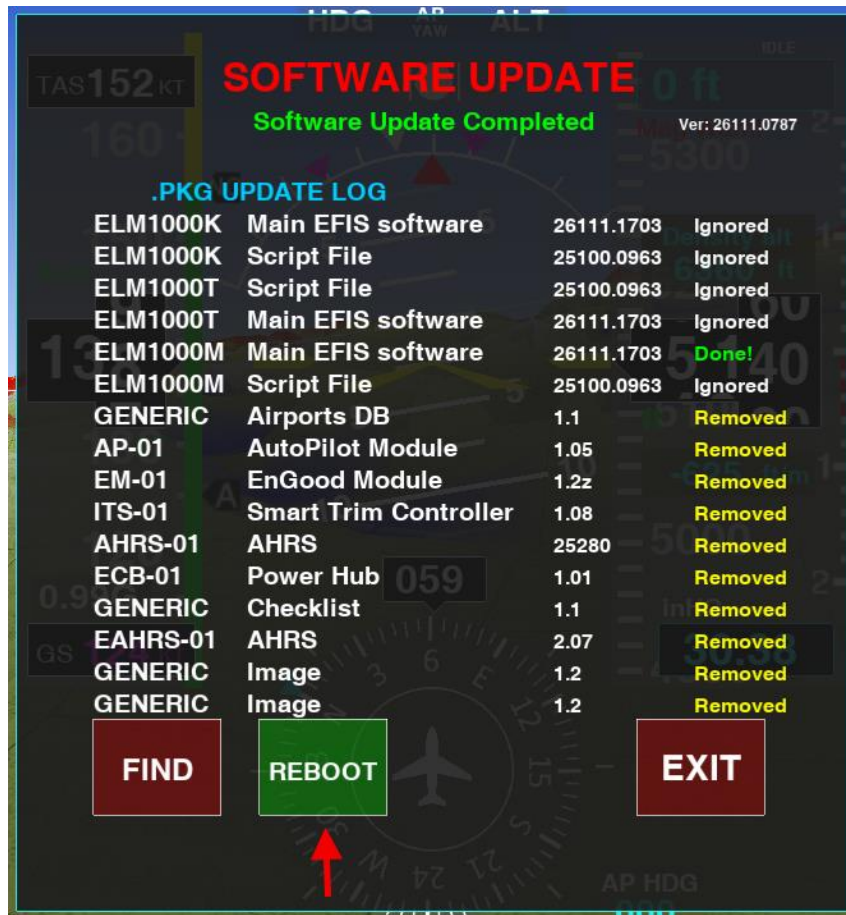
Completion

- Wait until the update process is fully completed
- Press **REBOOT** on the display

Important:

Reboot is required to activate the new software

After reboot, the EFIS will run the updated firmware



1.2 USB Update

Preparation

1. Download the correct update file from the manufacturer website
Example:
ELM800 Main Firmware Update
2. Prepare a USB flash drive:
 - Capacity: 4 GB to 16 GB
 - Format: FAT32
3. Create folder on USB drive root:

Updates

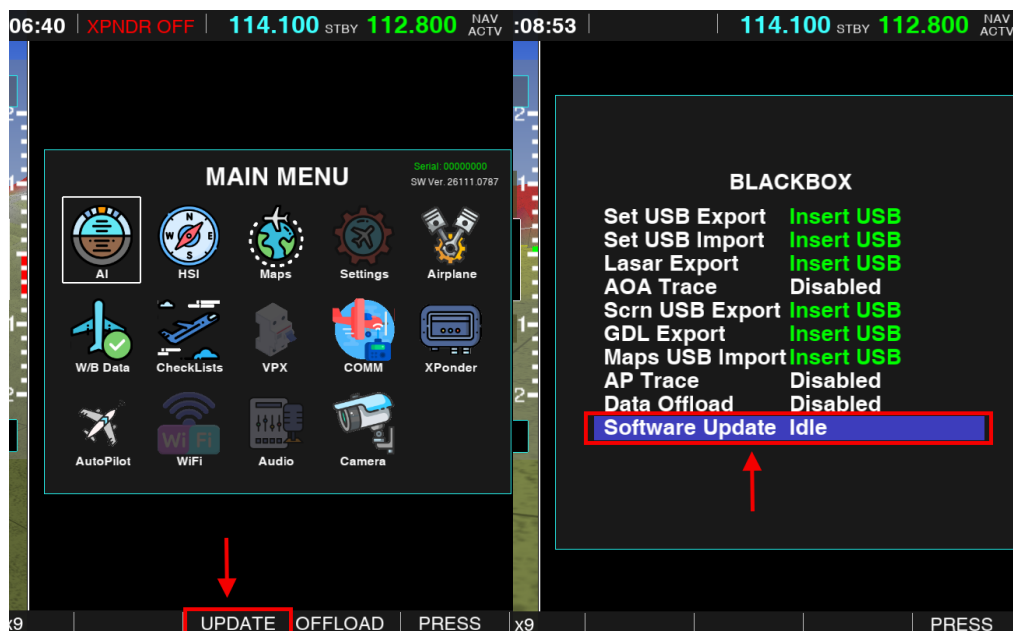
4. Copy update files into the folder **Updates**
-

Important Restrictions

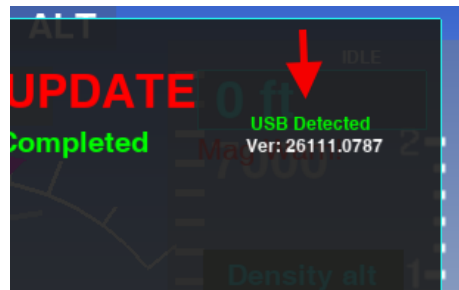
- Only **single firmware update file** is allowed in the folder
 - No additional `.pkg` files must be present
-

Procedure

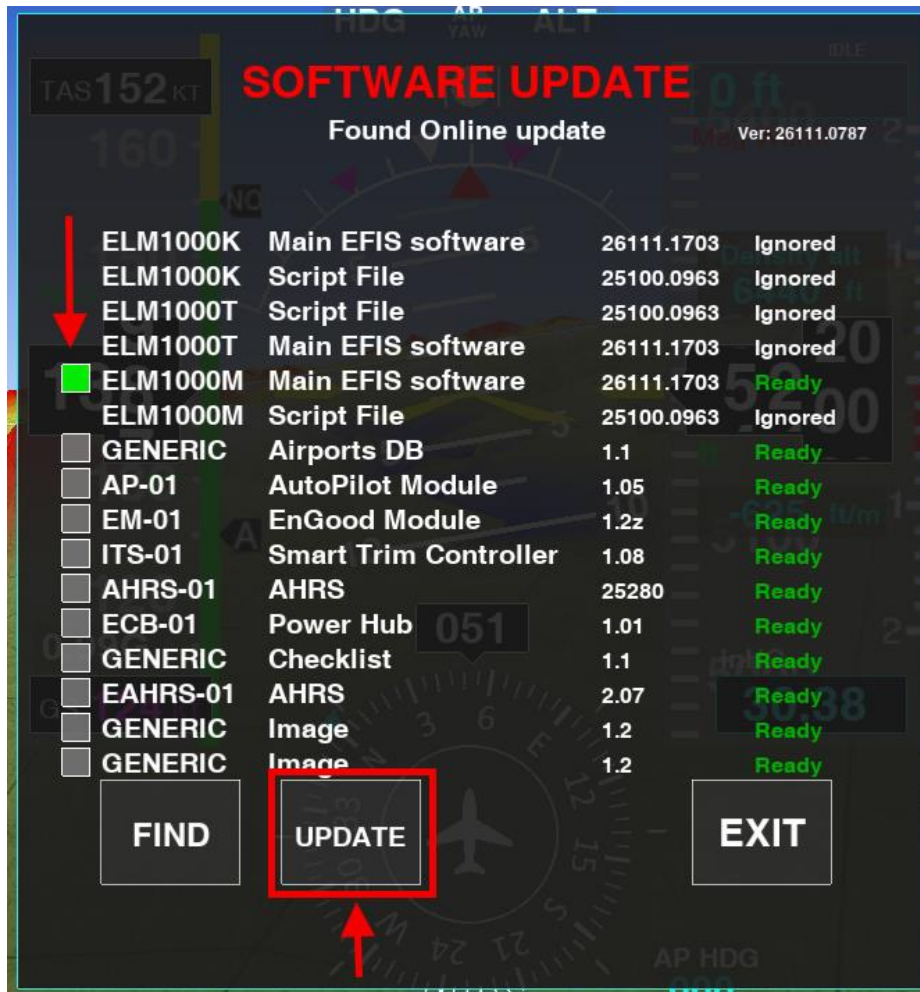
1. Insert the USB drive into the EFIS front USB port
2. Open the update menu:
 - Press **left knob** → **Main Menu**
 - Navigate to:
Settings → **BlackBox** → **Software Update**
or press **Button 5 (UPDATE)**



3. Confirm USB detection:
 - "USB Detected" appears in green in the top right corner



4. Press **FIND**
 - Wait for the system to scan for updates
5. When the update appears:
 - Select **Main EFIS Software**
 - Enable the checkbox (turns green)
6. Press **UPDATE**



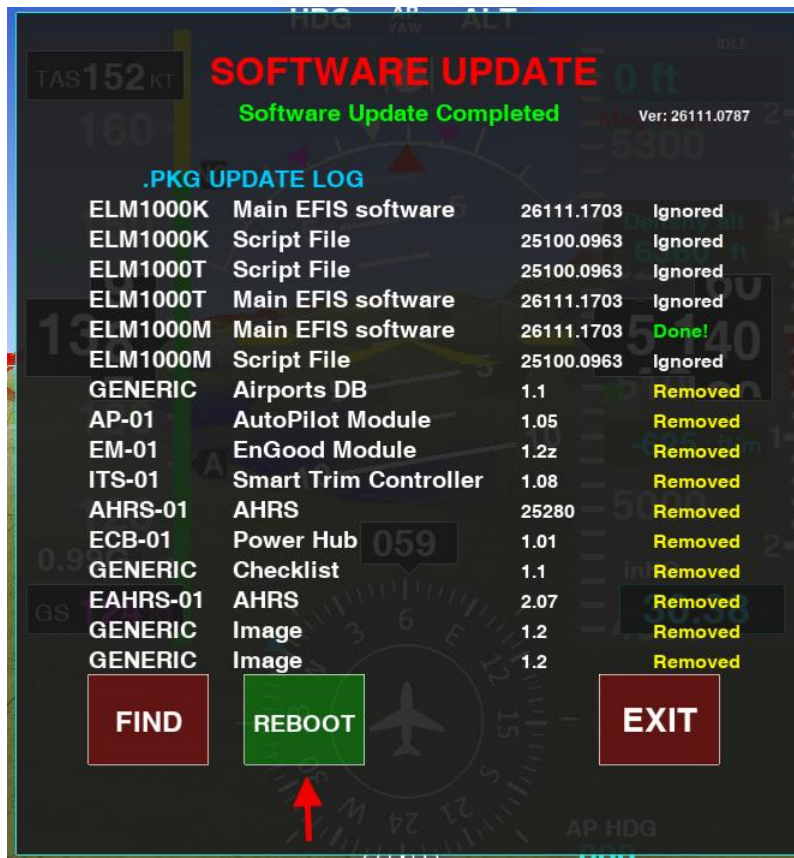
Completion

- Wait for installation to finish
- Press **REBOOT**

Important:

Do not power off the system during the update

After reboot, the EFIS will run the updated firmware



2. Navigation Database Update

2.1 USB Update

Preparation

1. Download required database updates from the manufacturer website
Example:
ELM800/1000 Obstacles Database Update
 2. Prepare USB flash drive:
 - Capacity: 4 GB to 16 GB
 - Format: FAT32
 3. Create folder on USB drive root:

Updates
 4. Copy update files into the folder *Updates*
-

Important Notes

- Multiple database updates may be placed in the folder
Example:
 - VFR charts
 - IFR charts
 - Obstacles database
 - Only one VFR charts and one IFR charts set can be installed in EFIS at same time
 - **Do NOT include any firmware update files** in the folder
-

Power Requirement

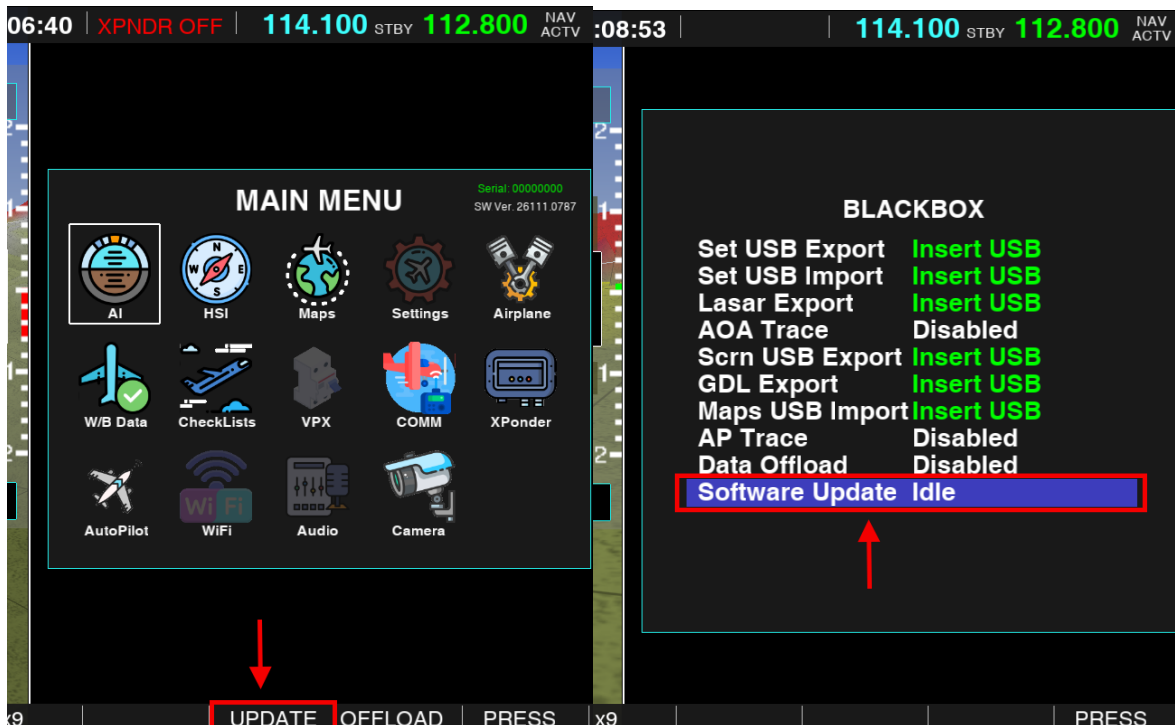
IMPORTANT:

Use external or ground power during database updates

Database updates may take up to **one hour or more** depending on data size

Procedure

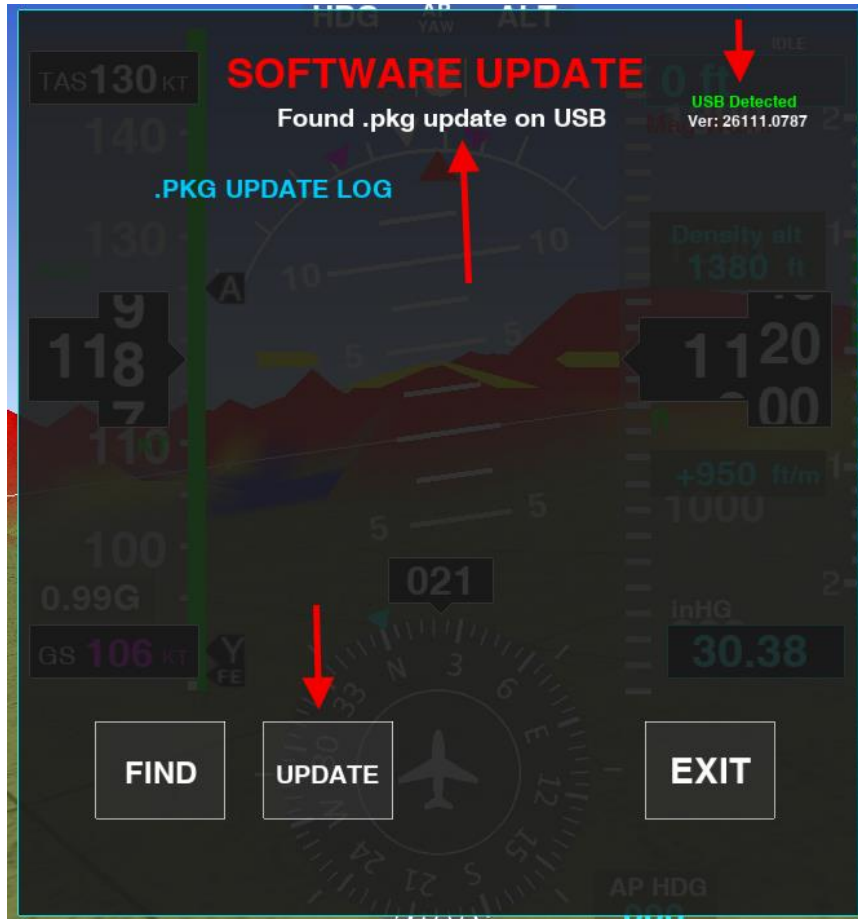
1. Insert USB drive into EFIS
2. Open update menu:
 - Press **left knob** → **Main Menu**
 - Navigate to:
Settings → **BlackBox** → **Software Update**
or (quick method) press **Button 5 (UPDATE)**
 - Please note that **Settings** menu locked by default for safety. To unlock press and hold left knob for 3 seconds while **Settings** menu selected.



3. Confirm USB detection:
 - "USB Detected" appears in green
4. Press **FIND**

5. When detected, the system will display:

Found .pkg update on USB



6. Press **UPDATE**

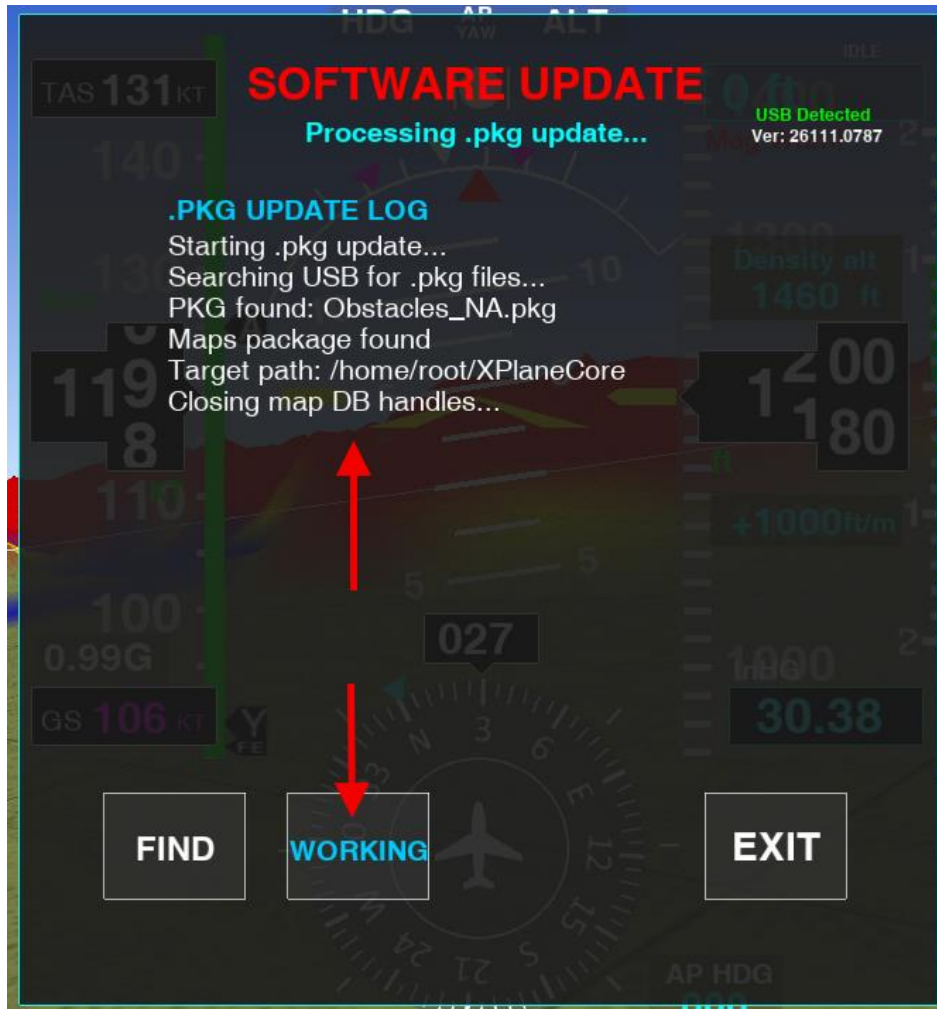
Completion

- The display will show update progress and logs
- Wait until the process completes

Important:

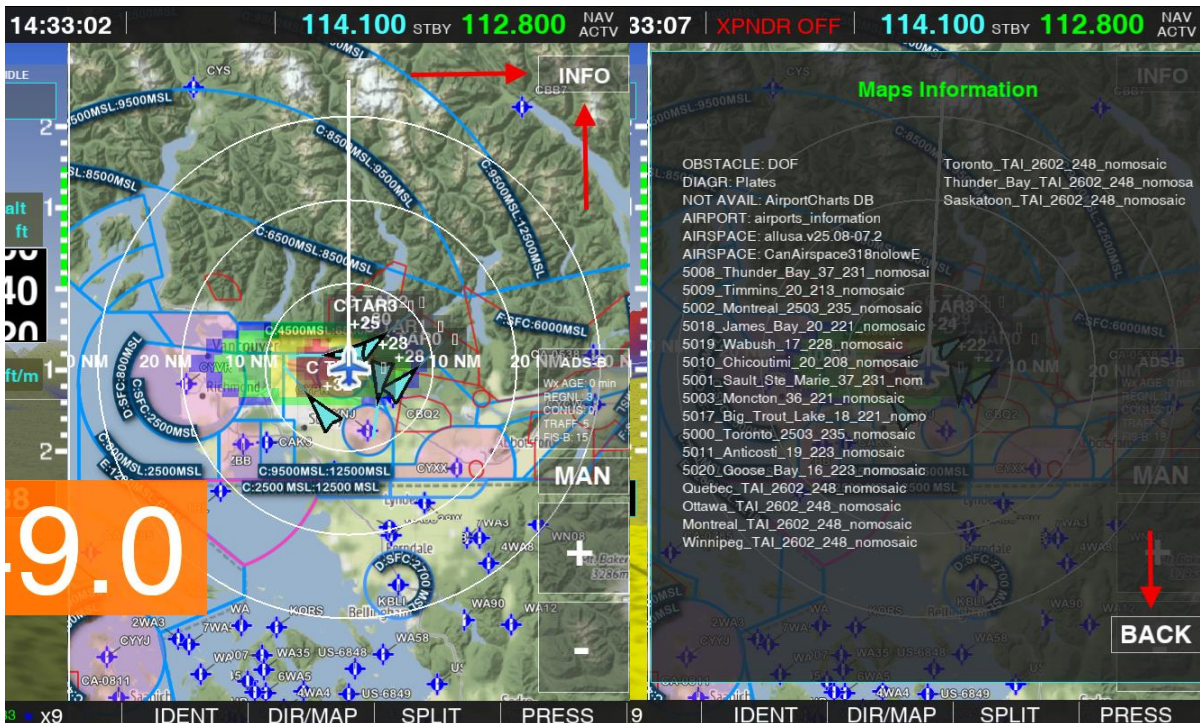
Do not turn off power during update

- Press **REBOOT** after completion



3. Verifying Installed Databases

1. Open the **Map** page (full screen or split screen)
2. Press the **INFO** button (top right corner)
3. The system will display:
 - Installed databases
 - Active versions
4. To exit:
 - Press and hold **BACK**



Final Notes

- Always use correct update files for your EFIS model
- Please note that you can only install and have one VFR charts set in EFIS
- Do not interrupt power during any update process
- Always reboot after update completion